

Summary & Highlights

The majority of Columbus and Franklin County influenza activity indicators continue to show decreases or stabilization and adjustment toward typical/historic average seasonal values in week 49.

- Local Geographic Activity Designation (Click [here](#) for definitions) = LOCALIZED
- Hospital labs reported 458 tests run with 6 positive results (1.3%) for week 49, 55% lower than the previous week.
- Hospital emergency department (ED) and pediatric urgent care (PUC) ILI indicators and respiratory related visits continue to be stable, with figures for ED visits at the baseline average for this time of year.
- School absences increased slightly in week 49 compared to the previous week, but is below the average for this time of year
- In week 49, sales of over-the-counter medications being tracked varied, with slight increases in electrolytes and chest rubs, decreases in thermometer sales, and stable cough and cold, anti-fever, and throat lozenge sales. A decrease in antiviral prescriptions was reported in week 48 (most recent week available).
- Nationally, seasonal influenza A (H1N1) and influenza B viruses co-circulated at low levels with 2009 influenza A (H1N1) viruses in week 48. Over 99% of all subtyped influenza A viruses reported to CDC were 2009 influenza A (H1N1) viruses.

Local Flu Activity Dashboard (All data are preliminary and may change as more reports are received.)

Indicators	Week Available	Current Week Value	% Change Chart from Last Week (-) (+)	# Weeks [¥] ▲ • ▼	General Trend Chart
Hospital Lab Data	49	1.3% Pos.	-55.0%	7 ▼	
ILI Outpatient Data (Sentinel Medical Sites)	49	0.23% of All Visits	-19.7%	7 ▼	
Hospital ED Data†:					
Coded as ILI	48	4.8% of All ED Visits	-10.6%	7 ▼	
Complaint Defined as ILI‡	49	20.9% of All ED Visits	-3.3%	1 ▼	
Categorized as Respiratory	49	17.2% of All ED Visits	-4.2%	2 ▼	
Pediatric Urgent Care Data†:					
Complaint Defined as ILI‡	49	53.3% of All PUC Visits	0.5%	1 •	
Categorized as Respiratory	49	48.1% of All PUC Visits	-5.4%	1 ▼	
School Absences	49	7.7% Absent	0.5%	1 •	
Death Certificate Pneumonia & Influenza Deaths†	49	10.73% of All Deaths	33.7%	2 ▲	
Medication Data:					
OTC Cough & Cold Sales	49	8,113 Total Sales	-2.5%	1 ▼	
Thermometer	49	152 Total Sales	-17.8%	1 ▼	
Antiviral Prescriptions	48	1.6% of All Anti-Infectives	-33.7%	6 ▼	
Influenza Associated Hospitalization	49 (as of 12/16 12:00 PM)	2 Cases Reported	-66.7%	7 ▼	

Reportable Conditions**	Cumulative Numbers as of August 1 - Dec. 16, 2009*, 12:00 PM	
	Suspected	Confirmed
Influenza Clusters/Outbreaks Reported	1	0
Influenza Associated Hospitalizations (IAH) Reported	2	453
IAH Confirmed Pandemic (H1N1) 2009§	Not Available	263
Pediatric Influenza Associated Death Reported	0	2

*Numbers subject to fluctuations as lab results are received and suspects are determined confirmed or not a case. Due to reporting variations, these numbers may represent an undercount.

**Based on assigned jurisdiction being Franklin County or City of Columbus and date case was created on the Ohio Disease Reporting System.

§Information provided for references (Reportable condition is any influenza associated hospitalization, regardless of influenza type).

†Franklin County, OH residents only (based on zipcode); ‡Broader definition used than initial weekly reports to encompass more potential ILI.

¥ Number of weeks "▲" = Increase (>2%), "▼" = Decrease (>2%), "•" = Stable (-2% to +2%)

Pneumonia and Influenza (P&I) Mortality

In week 49 of 2009 (Dec. 6th, 2009 – Dec. 12th, 2009), 10.7% of all Columbus deaths were reported as due to pneumonia or influenza (Figure 1). Nationally, 7.8% of deaths reported were due to pneumonia or influenza in week 47. This national percentage was slightly above to the national epidemic threshold of 7.1%.

Influenza Morbidity and Influenza-Like Illness (ILI) Reports

Outpatient visits for ILI at sentinel medical practice reporting sites (0.23% of all visits reported) decreased in week 49 compared to the previous week. The week 48 percentage of Franklin County resident BioSense ED hospital encounters is 4.8% for ILI coded chief complaints and 2.6% for ILI diagnosis (Figure 2). For the most part, specific complaints of influenza and defined influenza like illness symptoms again are stable compared to the previous week for ED and Pediatric Urgent Care sites (Figures 2-4). In week 49, the ED percentage of visits for ILI defined symptoms is nearly identical the weekly average typically seen in past seasons.

Nationally, during week 48 of 2009, 2.7% of patient visits reported through the US Outpatient Influenza-like Illness Surveillance Network (ILINet), were due to influenza-like illness (ILI). This is the 6th week in a row that the national percentage has decreased. This percentage is still above the national baseline of 2.3%.

Laboratory Surveillance

During week 49 of 2009, reporting Franklin County sentinel laboratories tested 458 specimens, with 6 (1.3%) positive (Figure 5). The total number of tests done by local reporting labs from week 35 through week 49 is 13,163, with 2,170 positives (2,160 type A, 10 type B). Nationally, during week 48, WHO and NREVSS laboratories reported 5,389 specimens tested for influenza viruses, 478 (8.9%) of which were positive (Figures 3). During week 48, seasonal influenza A (H1N1) and influenza B viruses co-circulated at low levels with 2009 influenza A (H1N1) viruses. Over 99% of all subtyped influenza A viruses reported to CDC this week were 2009 influenza A (H1N1) viruses. See <http://www.cdc.gov/flu/weekly/> for a comprehensive national report.

The table below shows 2009-10 (starting August 30th, 2009) cumulative PCR and culture influenza lab results from ODH lab (totals as of 12/14/2009).

Location	# Seasonal A (H1)	# Seasonal A (H3)	# Seasonal B	# Pandemic A (H1)	# PCR Influenza Not Detected
Franklin County	0	0	0	139*	271
Ohio	1	1	0	1,185*	1,558

Source: ODH Lab (based on county of provider submitting specimen, not county of patient's residence)

*Not an official count of Pandemic Influenza A (H1N1) in Franklin County or Ohio. Similar to the CDC and ODH, individual case counts are no longer being tracked. Testing at ODH is limited to those meeting criteria. See <http://www.cdc.gov/flu/weekly/> or <http://www.cdrcinfo.com/H1N1flu.html> for more details.

ED and Pediatric Urgent Care Respiratory Visits

In the 49th week of 2009, the percentage of all ED visits categorized as *respiratory* (17.2%) is similar to the percentage seen the previous week. Also, the percentage of reporting Pediatric Urgent Care visits categorized as *respiratory* (48%) is slightly lower than the previous week (Figure 6).

Over-the-Counter Medication Sales and Antiviral Prescriptions

In week 49 of 2009, there were slight increases in electrolyte and chest rub sales, decreases for thermometer sales, and relatively no change in cough & cold medication, pediatric and adult anti-fever, and throat lozenges (Figure 7). In week 48 (latest week available), the percentage of Franklin County pharmacy prescriptions for antivirals, out of all anti-infective prescriptions, decreased for the 6th week in a row (Figure 8). During week 48, the national antiviral prescription percentage also decreased.

Additional Influenza Activity Web Links:

National Pandemic H1N1 Situation Updates: <http://www.cdc.gov/h1n1flu/update.htm>

International Pandemic H1N1 Activity Map: <http://www.cdc.gov/h1n1flu/updates/international/map.htm>

World health Organization Situation Updates: <http://www.who.int/csr/disease/swineflu/updates/en/index.html>

Columbus & Franklin County Influenza Monitoring Summary – Week 49 (12/6/09-12/12/09)

**Figure 1: Percentage of Deaths due to Pneumonia and Influenza
Columbus, Ohio 2009-10**

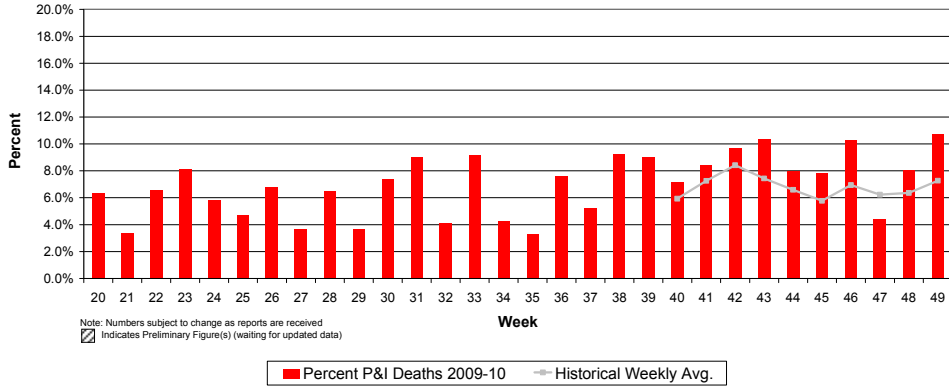
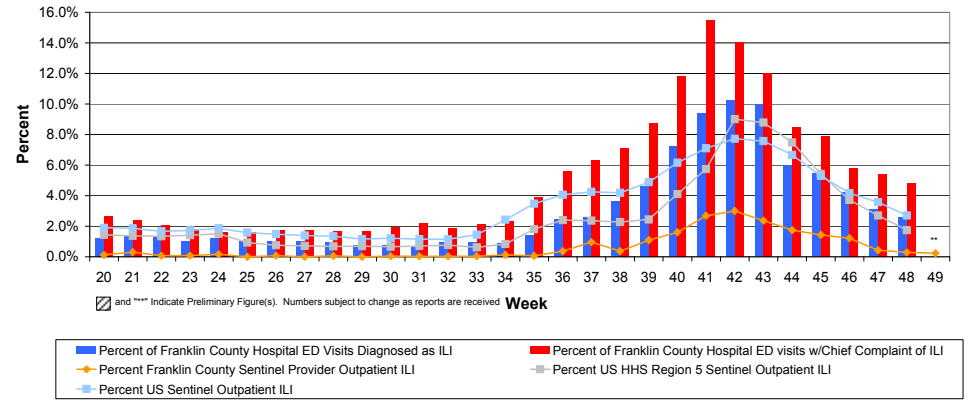


Figure 2: Percentage of Local, National, and HHS Region 5 ILI Outpatient visits and Percentage of Franklin County Resident BioSense Hospital ILI ED Visits, 2009-10



**Figure 3: Franklin County Resident ILI Specific Complaint ED and Pediatric Urgent Care Visits,
2009-10, Franklin County, OH**

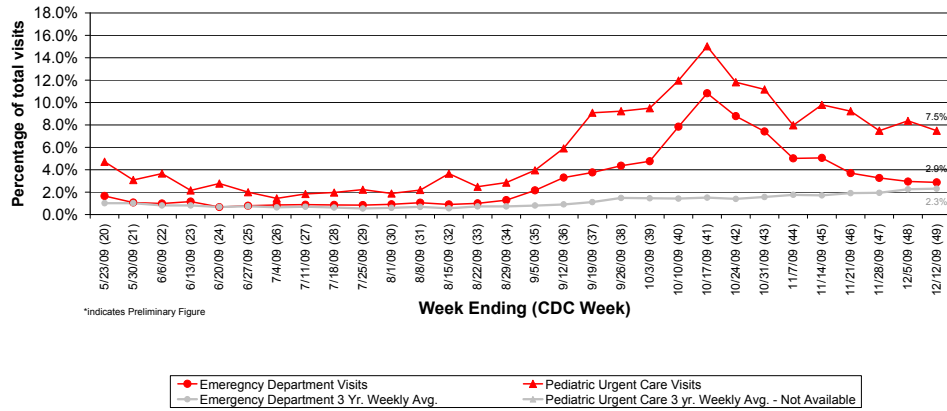
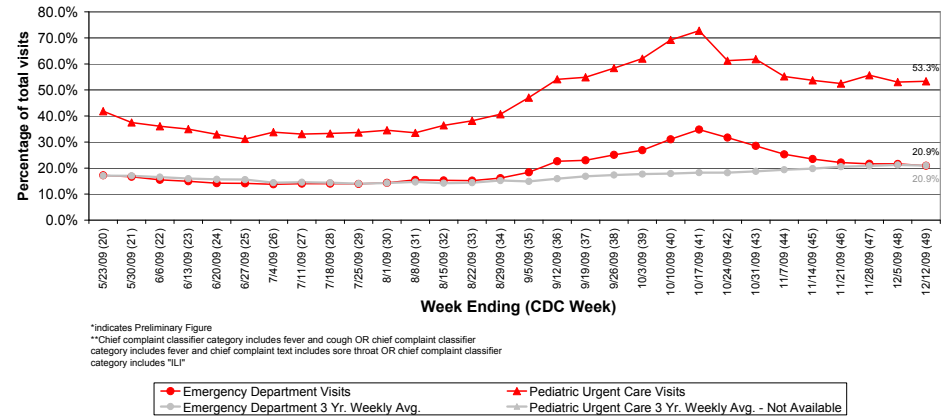


Figure 4: Franklin County Resident ILI Defined ED and Pediatric Urgent Care Visits, 2009-10,
Franklin County, OH**



Columbus & Franklin County Influenza Monitoring Summary – Week 49 (12/6/09-12/12/09)

Figure 5: Percentage of Local Reporting and National Laboratory Positive Influenza Tests by Week, 2009-10

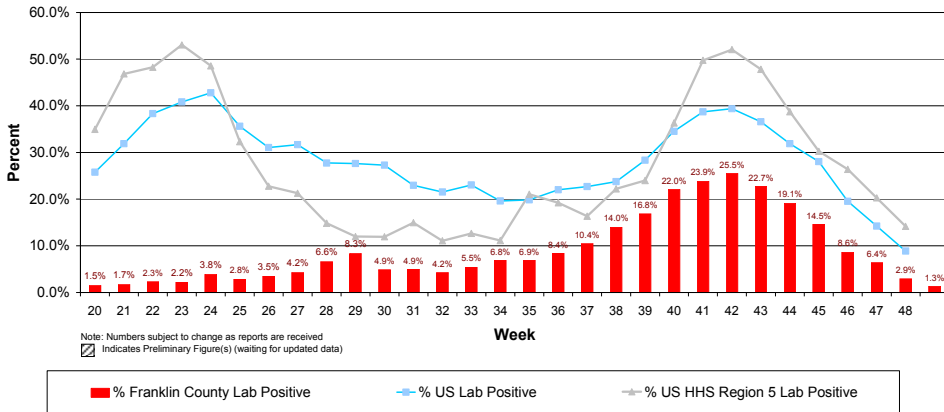


Figure 6: Franklin County Resident Respiratory ED and Pediatric Urgent Care Visits, 2009-10, Franklin County, OH

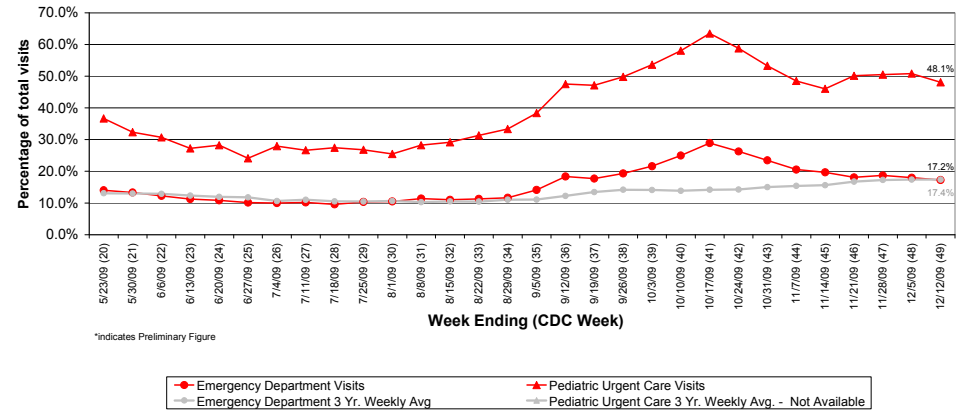


Figure 7: Selected Number of Over-the-Counter Medication Sales and Weekly Baseline Averages and Medians, 2009-10, Franklin County, OH

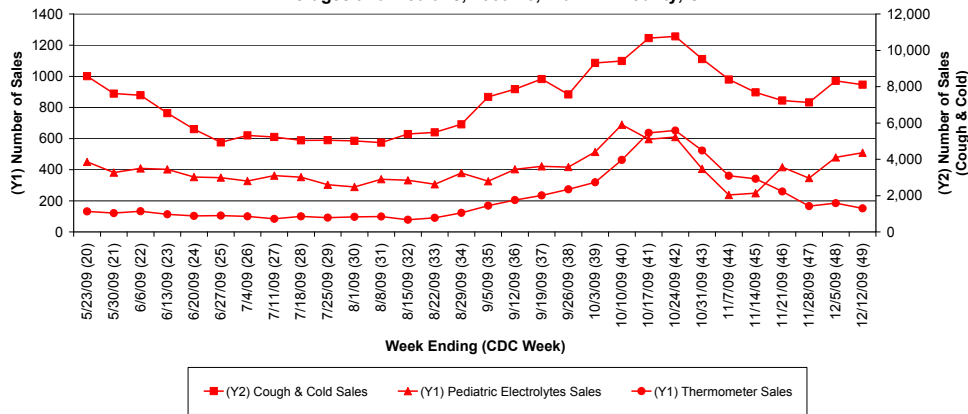


Figure 8: Percentage of Antiviral Prescriptions out of Total Number of Anti-Infective Prescriptions (Selected Pharmacies)

