

2009-2010 Columbus & Franklin County Seasonal Influenza Activity Weekly Summary (Week 7, Feb. 14th – Feb. 20th)

Summary & Highlights

Overall, week 7 local influenza activity indicators continue to show relatively stable trends. ILI Outpatient Sentinel Sites, ED visits, and labs are currently below seasonal historical baseline levels.

- Local Geographic Activity Designation (Click [here](#) for definitions) = SPORADIC
- Preliminary information from medical facility labs reported 166 tests run with 0 positive results (0.0%) for week 7, this percentage positive is lower than the previous week and is lower than the historical baseline average.
- ED and Pediatric Urgent Care (PUC) visits for influenza-like-illness (ILI) and respiratory symptom were slightly lower in week 7 compared to the previous week. Figures for ED visits are lower than the historical baseline average for this time of year.
- Sales of over-the-counter medications were mostly lower; with decreases in cough and cold, electrolytes, pediatric anti-fever, and throat lozenges sales; increased adult anti-fever medication sales; and stable chest rub sales. Updated antiviral prescription information from Franklin County was not available at the time of this report.
- Nationally, during week 6, influenza B viruses co-circulated at low levels with 2009 influenza A (H1N1) viruses. All subtyped influenza A viruses reported to CDC this week were 2009 influenza A (H1N1) viruses.

Local Flu Activity Dashboard *(All data are preliminary and may change as more reports are received.)*

Indicators	Week Number Available	Current Week Value	% Change Chart from Last Week [‡] (-) (+)	# Weeks [¥] ▲ ▼	General Trend Chart (If available, ---- line is historical avg.)
Medical Facility Lab Data	7	0.0% Pos.	-100.0%	3 ▼	
ILI Outpatient Data (Sentinel Medical Sites)	7	0.32% of All Visits	87.4%	1 ▲	
Hospital ED Data [†] :					
<i>Coded as ILI</i>	5	2.87% of All ED Visits	NOTE: Updated data not available at the time of this report		
<i>Complaint Defined as ILI</i>	7	17.9% of All ED Visits	-2.4%	1 ▼	
<i>Categorized as Respiratory</i>	7	15.35% of All ED Visits	-4.0%	1 ▼	
Pediatric Urgent Care Data [†] :					
<i>Complaint Defined as ILI</i>	7	46.4% of All PUC Visits	-9.1%	2 ▼	
<i>Categorized as Respiratory</i>	7	44.7% of All PUC Visits	-10.8%	2 ▼	
School Absences	7	9.5% Absent	-4.3%	1 ▼	
Death Certificate Pneumonia & Influenza Deaths [†]	7	10.86% of All Deaths	17.9%	1 ▲	
Medication Data:					
<i>OTC Cough & Cold Sales</i>	7	6,385 Total Sales	-11.4%	1 ▼	
<i>Thermometer</i>	7	137 Total Sales	-12.2%	2 ▼	
<i>Antiviral Prescriptions</i>	5	0.55% of All Anti-Infectives	NOTE: Updated data not available at the time of this report		
Confirmed Influenza Associated Hospitalizations	7 (as of 2/23 12:00 PM)	0 Reported	NA [‡]	NA [‡]	

Reportable Conditions**	Cumulative Numbers as of Feb. 23, 2010*, 12:00 PM	
	2009	2010 YTD
Influenza Clusters/Outbreaks Reported	1 suspected	0
Influenza Associated Hospitalizations (IAH) Reported (see also Fig. 8)	522	7
IAH Confirmed 2009 Influenza A (H1N1)§	267	3
Pediatric Influenza Associated Death Reported	2	0

*Numbers subject to fluctuations as lab results are received and suspects are determined confirmed or not a case.
 **Confirmed cases only unless stated otherwise. Based on assigned jurisdiction being Franklin County or City of Columbus and date case was created on the Ohio Disease Reporting System.
 ‡Interpret with caution. Indicators with small number subject to large weekly percentage fluctuations.
 §Information provided for references (Reportable condition is any influenza associated hospitalization, regardless of influenza type).
 †Franklin County, OH residents only (based on zipcode)
 ¥ Number of weeks "▲" = Increase (>2%), "▼" = Decrease (>2%), "●" = Stable (-2% to +2%)

CDC 122-Cities Mortality Reporting System: Pneumonia and Influenza (P&I) Mortality

In week 7 of 2009 (Feb. 14th, 2009 – Feb. 20th, 2010), 10.9% of all Columbus deaths were reported as due to pneumonia or influenza (Figure 1). Nationally, 7.7% of deaths reported were due to pneumonia or influenza in week 6. This national percentage is above the national epidemic threshold of 7.8%.

Influenza Morbidity and Influenza-Like Illness (ILI) Reports

The preliminary percentage of outpatient visits for ILI at sentinel medical practice reporting sites (0.32% of all visits reported) increased in week 7 compared to the previous week, but is below the historical baseline average. At the time of this report, updated percentages of Franklin County resident BioSense ED hospital encounters with ILI coded chief complaints and ILI diagnosis was not available (Figure 2). Specific complaints of influenza and defined influenza like illness symptoms in week 7 decreased slightly compared to the previous week for EDs and PUC sites (Figures 2-3). In week 7, the ED percentage of visits for ILI defined symptoms is lower than the weekly average typically seen in past seasons.

Nationally, during week 6 of 2010, 2.1% of patient visits reported through the US Outpatient Influenza-like Illness Surveillance Network (ILINet), were due to influenza-like illness (ILI). This percentage is similar to the previous week and is below the national baseline of 2.3%.

Laboratory Surveillance

During week 7 of 2010, reporting Franklin County sentinel medical facility laboratories tested 166 specimens, with 0 (0.0%) positive (Figure 5). The total number of tests done by local reporting labs from week 35 of 2009 through week 7 of 2010 is 16,693; with 2,222 positives (2,210 type A, 12 type B). Nationally, during week 6, WHO and NREVSS laboratories reported 3,656 specimens tested for influenza viruses, 129 (3.5%) of which were positive (Figure 4). Nationally, during week 6, influenza B viruses co-circulated at low levels with 2009 influenza A (H1N1) viruses. All subtyped influenza A viruses reported to CDC this week were 2009 influenza A (H1N1) viruses. See <http://www.cdc.gov/flu/weekly/> for a comprehensive national report.

The table below shows 2009-10 (starting August 30th, 2009) cumulative PCR and culture influenza lab results from ODH lab (totals as of 2/22/2010).

Location	# Seasonal A (H1)	# Seasonal A (H3)	# Seasonal B	# Pandemic A (H1)	# PCR Influenza Not Detected
Franklin County	0	0	0	141*	272
Ohio	1	1	0	1,192*	1,762

Source: ODH Lab (based on county of provider submitting specimen, not county of patient's residence)

*Not an official count of Pandemic Influenza A (H1N1) in Franklin County or Ohio. Similar to the CDC and ODH, individual case counts are no longer being tracked. Testing at ODH is limited to those meeting criteria. See <http://www.cdc.gov/flu/weekly/> or <http://www.cdrcinfo.com/H1N1flu.html> for more details.

ED and Pediatric Urgent Care Respiratory Visits

In the 7th week of 2010, the percentage of all ED visits categorized as *respiratory* (15.4%) decreased slightly compared to the percentage seen the previous week and is lower than the historic baseline. The percentage of reporting Pediatric Urgent Care visits categorized as *respiratory* (46.3%) also decreased compared to the percentage seen in the previous week (Figure 5).

Over-the-Counter (OTC) Medication Sales and Antiviral Prescriptions

In week 7 of 2010, the majority of OTC medications sales were lower compared to the previous week. Decreased OTC medication sales were seen in cough and cold meds, pediatric anti-fever meds, throat lozenges, electrolytes and thermometers; increased sales adult anti-fever; and stable sales chest rubs (Figure 6). Week 6 updated antiviral prescription information for Franklin County was not available at the time of this report. During week 6, the national antiviral prescription percentage was similar to the previous week.

Additional Influenza Activity Web Links:

National Pandemic H1N1 Situation Updates: <http://www.cdc.gov/h1n1flu/update.htm>

International Pandemic H1N1 Activity Map: <http://www.cdc.gov/h1n1flu/updates/international/map.htm>

World health Organization Situation Updates: <http://www.who.int/csr/disease/swineflu/updates/en/index.html>

Columbus & Franklin County Influenza Monitoring Summary – Week 7 (2/14/2010-2/20/2010)

**Figure 1: Percentage of Deaths due to Pneumonia and Influenza
Columbus, Ohio 2009-10**

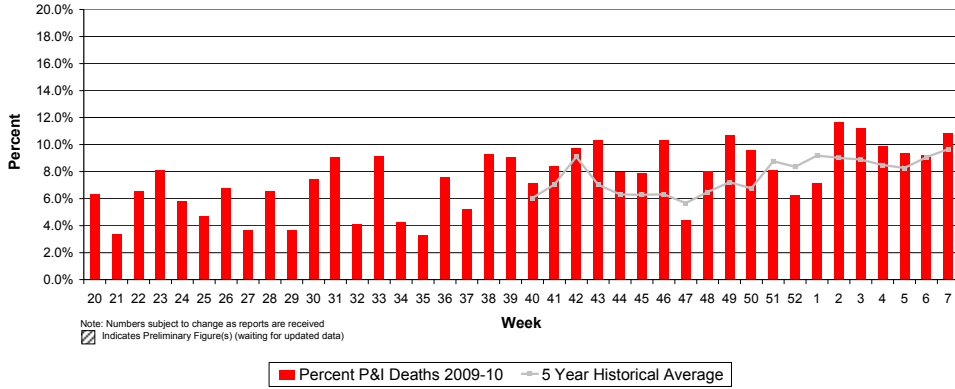


Figure 2: Percentage of Local, National, and HHS Region 5 ILI Outpatient visits and Percentage of Franklin County Resident BioSense Hospital ILI ED Visits, 2009-10

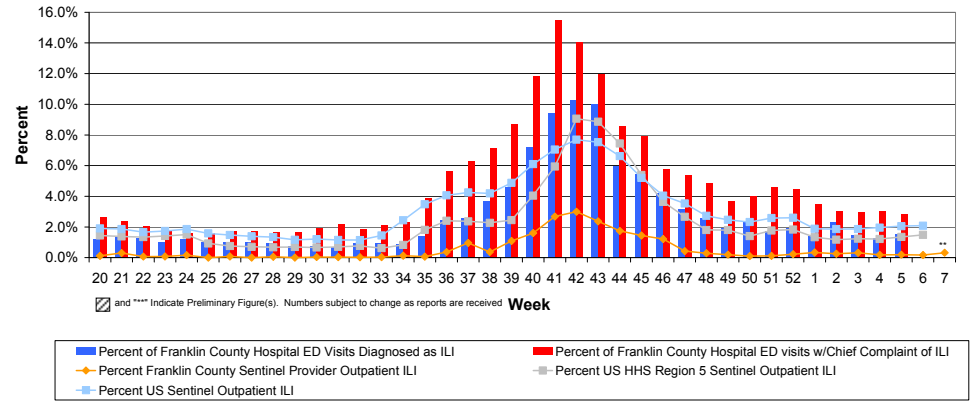


Figure 3: Franklin County Resident ILI Defined ED and Pediatric Urgent Care Visits, 2009-10, Franklin County, OH**

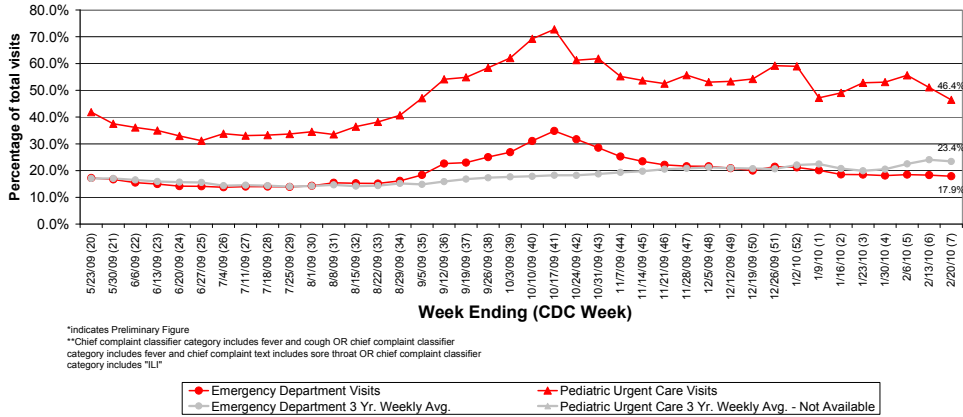
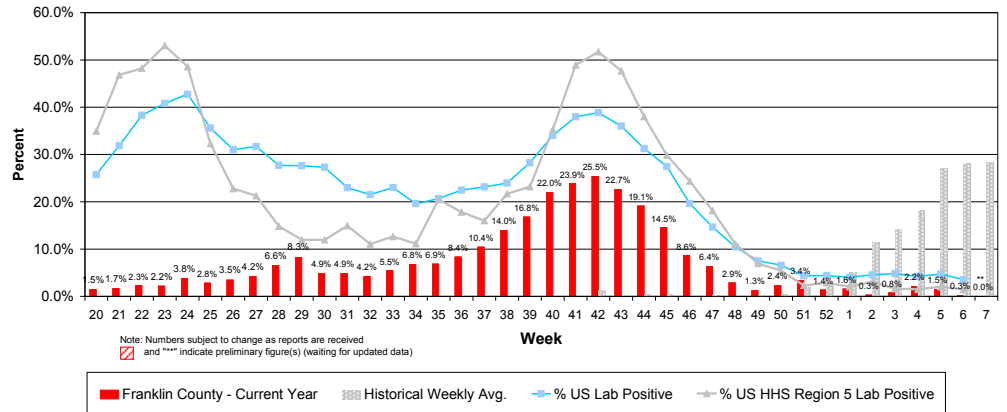


Figure 4: Percentage of Local Reporting and National Laboratory Positive Influenza Tests by Week, 2009-10



Columbus & Franklin County Influenza Monitoring Summary – Week 7 (2/14/2010-2/20/2010)

Figure 5: Franklin County Resident Respiratory ED and Pediatric Urgent Care Visits, 2009-10, Franklin County, OH

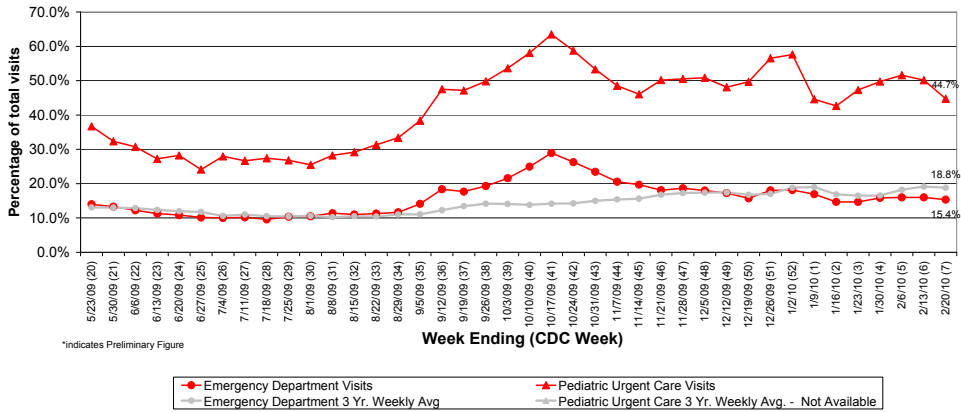


Figure 6: Selected Number of Over-the-Counter Medication Sales and Weekly Baseline Averages and Medians, 2009-10, Franklin County, OH

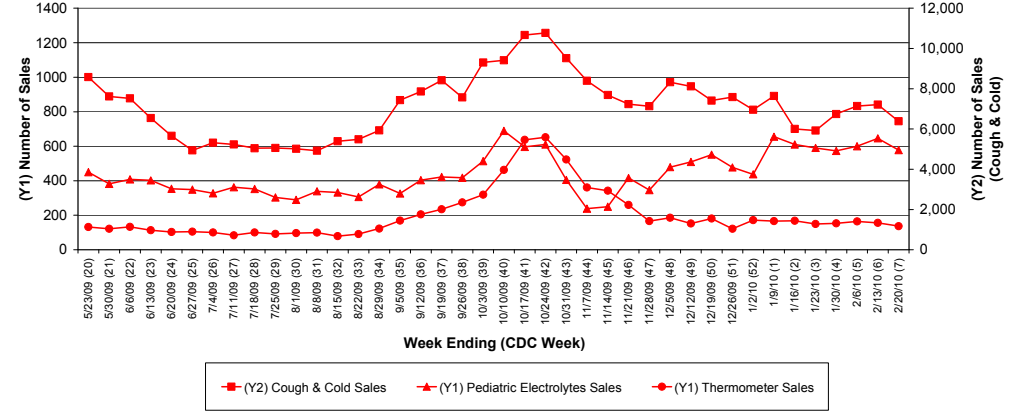


Figure 7: Percentage of Antiviral Prescriptions out of Total Number of Anti-Infective Prescriptions (Selected Pharmacies)

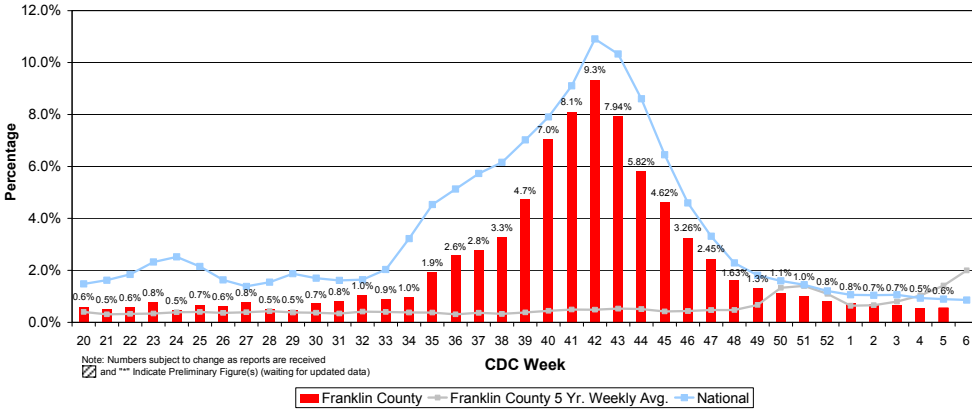


Figure 8: Franklin County Confirmed Influenza Associated Hospitalizations by Hospital Admission Week, Since August, 2009 (As of 12:00 PM, 2/16/2010)

